



Shark

Porcelain tiles



Motown-B_60*60



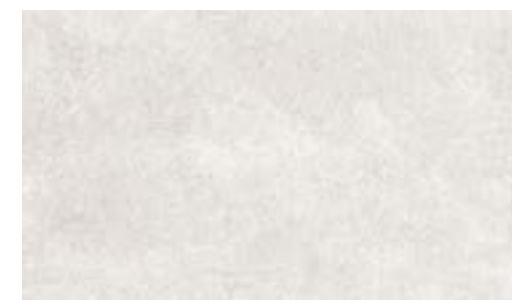
Shark-B/60*60 Shark-B_30*60



Shark-N_60*60

Shark

Porcelain tiles



SHARK B



SHARK S



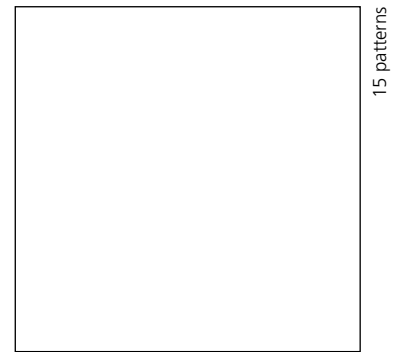
SHARK N



Shark

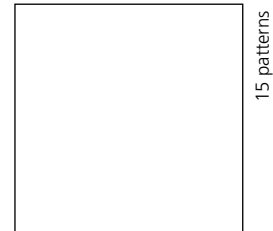
Porcelain tiles

SHARK



90 * 90 * 1 cm | 36 * 36"

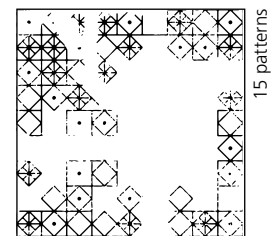
RECTIFIED	NATURAL	LAPATTO
	BN48	BN42
B	25531	25534
S	25532	25535
N	25533	25536



60 * 60 * 1 cm | 24 * 24"

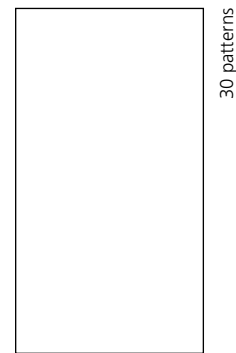
RECTIFIED	NATURAL	LAPATTO
	BN33	BN38
B	25527	25524
S	25528	25525
N	25529	25526

MOTOWN



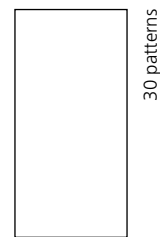
60 * 60 * 1 cm | 24 * 24"

RECTIFIED	NATURAL	LAPATTO
	BN40	BN83
B	25556	25570
S	25569	25571
N	25568	25572



45 * 90 * 1 cm | 18 * 36"

RECTIFIED	NATURAL	LAPATTO
	BN70	BN43
B	25537	25542
S	25539	25545
N	25540	25546



30 * 60 * 1 cm | 12 * 24"

RECTIFIED	NATURAL	LAPATTO
	BN39	BN74
B	25548	25553
S	25550	25554
N	25551	25555



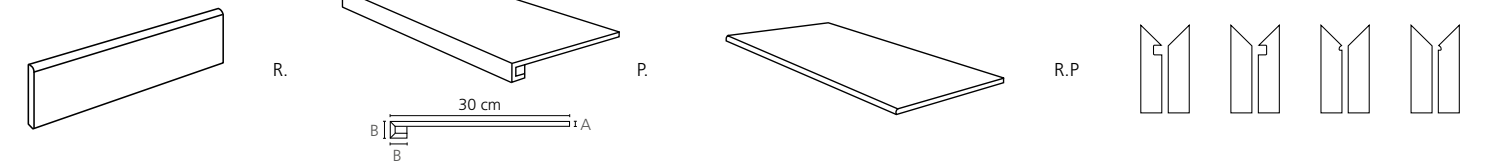
26200 ALUMINIO/90/MAT _ 90 * 0,5 cm | 35 * 0,2" _ P39



26201 L. GOLDEN/MAT/90 _ 90 * 0,5 cm | 35 * 0,2" _ P39

PIEZA COMPLEMENTARIA | COMPLEMENTARY PIECE

Rodapie - Skirting	Peldaño técnico - Technical stair - thread	Peldaño romo - Rounded stair - thread	*S.K.I.	*S.K.D.	*Z.R.I.	*Z.R.D.
--------------------	--	---------------------------------------	---------	---------	---------	---------



8 * 90 3 * 36" P44	30 * 90 12 * 36" P76	30 * 90 12 * 36" P61	8 * 30 3 * 12" P55			
8 * 90/L 3 * 36" P48	30 * 60 12 * 24" P54	30 * 60 12 * 24" P64				
8 * 60 3 * 24" P34	A= 1 cm B= 3 cm					
8 * 60/L 3 * 24" P37						

CARACTERÍSTICAS TÉCNICAS | TECHNICAL CHARACTERISTICS

joint	frost proof	versatile	matt	diferent shades	shade variation	various graphics

CARACTERÍSTICAS TÉCNICAS ANTIDESLIZAMIENTO | ANTI-SLIP CHARACTERISTICS

Ensayo Essay	Características Features	Resultado Result	
DIN 51130	Ángulo crítico (Pies calzados) Critical angle (footwear)	NAT	LAPATTO
DIN 51097	Ángulo crítico (Pies descalzos) Critical angle (Wet loaded barefoot)	R10	R9
BS 7976-2	Antideslizamiento (Test del péndulo) Slip resistance (Pendulum test-PTV)	A+B	-
UNE-ENV 12633	Antideslizamiento (Test del péndulo) Slip resistance (Pendulum test)	+36 Wet	-
ISO 10545-7	Resistencia a la Abrasión Superficial Resistance to Surface Abrasion	Class 2	Class 2
	Producto certificado por CSTB CSTB Certified product	PEI 4	PEI 4
		✓	✓

EMBALAJE | PACKING

(Los pesos aquí reflejados pueden sufrir ligeras variaciones en función del lote de producción. Weights shown here may slightly vary depending on the production lot.)

Formato Sizes	Cajas Boxes			Pallet				Cont./20' 21500 kg.	
	Piezas	m2/ sq.m	kg	Cajas	m2/ sq.m	kg	Tamaño cm aprox.	m2/ sq.m	m2/ sq.m
30 * 60 * 1	6	1,08	24,30	48	51,84	1190	120 * 80 * 75	936,61	1045,51
45 * 90 * 1	2	0,81	19,08	36	29,16	699	100 * 100 * 59	896,91	1001,20
60 * 60 * 1	3	1,08	24,30	36	38,88	899	120 * 80 * 75	929,83	1037,95
90 * 90 * 1	2	1,62	37,96	22	35,64	860	105 * 95 * 75	891	994,60
inch	Units	ft2	lb	Boxes	ft2	lb	Sizes inch approx.	ft2	ft2
11 13/16 * 23 5/8 * 3/8	6	11,63	53,57	48	558,01	2623,95	41 5/16 * 31 1/2 * 29 1/2	10081,62	11253,90
17 11/16 * 35 7/16 * 3/8	2	8,72	42,07	36	313,88	1541,30	39 3/8 * 39 3/8 * 23 1/4	9654,34	10776,94
23 5/8 * 23 5/8 * 3/8	3	11,63	53,59	36	418,50	1982,30	41 5/16 * 31 1/2 * 29 1/2	10008,72	11172,53
35 7/16 * 35 7/16 * 3/8	2	17,44	83,70	22	383,63	1896,30	41 5/16 * 37 3/8 * 29 1/2	9590,72	10705,92