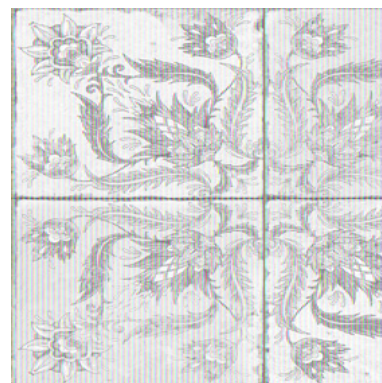


# peronda

## FS IVY SAGE

Model: **FS IVY SAGE**  
Reference: **26172**      **SAGE**  
Size: **45X45**      cm  
Thickness: **10,50**      mm  
Finish: **Natural**  
Body Type: **FLOOR TILE - GROUP BIIa**



### Water absorption

EN ISO-10545-3	Water absorption	<b>3% &lt; E &lt; 6%</b>
----------------	------------------	--------------------------

### Dimensional characteristics

EN ISO-10545-2	Surface quality	<b>&gt; 95%</b>
EN ISO-10545-2	Curvature flatness	<b>± 0,5 % / ± 2,0 mm</b>
EN ISO-10545-2	Thickness	<b>± 5% / ± 0,5 mm</b>
EN ISO-10545-2	Length and Width	<b>± 0,6 % / ± 2,0 mm</b>
EN ISO-10545-2	Rectangularity	<b>± 0,5% / ± 2,0 mm</b>
EN ISO-10545-2	Straightness of sides	<b>± 0,5 % / ± 1,5 mm</b>

### Mechanical characteristics

EN ISO 10545-11	Crazing resistance	<b>Pass</b>
EN ISO 10545-9	Thermal shock resistance	<b>Pass</b>
EN ISO-10545-4	Breaking strength	<b>&gt; 1000 N</b>
EN ISO-10545-4	Modulus of rupture	<b>&gt; 22 N/mm2</b>

### Surface characteristics

EN ISO 10545-7	Surface abrasion resistance	<b>4</b>
EN ISO 10545-7	Visible failure at No of revolutions	<b>6000 rev.</b>
EN-101	Surface scratch resistance	<b>6</b>

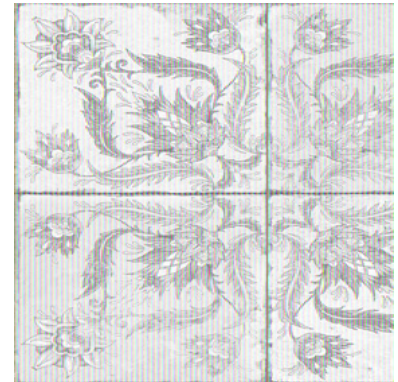
### Chemical characteristics

EN ISO-10545-13	High concentrations of acids and alkalis	<b>HA/HA/HA</b>
EN ISO-10545-13	Low concentrations of acids and alkalis	<b>LA/LA/LA</b>
EN ISO-10545-13	Household chemicals and swimming pool salts	<b>A/A</b>
EN ISO-10545-14	Stain resistance	<b>5/-/5/5</b>

# peronda

## FS IVY SAGE

Model: **FS IVY SAGE**  
Reference: **26172**      **SAGE**  
Size: **45X45**      cm  
Thickness: **10,50**      mm  
Finish: **Natural**  
Body Type: **FLOOR TILE - GROUP BIla**



### Non-slip characteristics

ANSI A137	Dynamic coefficient of friction (DCOF)	<b>&gt; 0,42</b>
BS-7976-2	Slip resistance test (PTV) - wet conditions	<b>+36</b>
DIN-51130	Critical angle (footwear)	<b>R-9</b>
UNE-ENV-12633	Slip resistance (pendulum test)	<b>1</b>

### CE MARKING



CE Declaration of Performance: **003CPR2017-08-01**

Before laying the tiles, check the shade, calibre and quality. No claims will be accepted once the tiles have been laid. Leave a tile joint of at least 0.5 mm in the case of rectified tiles and 1.5 mm for non-rectified ones. The tile colour shown in this data sheet is merely indicative and it might differ from the real tile colour. This document is purely for sales purposes and it cannot be used in any legal or administrative proceedings, in a witness statement, or as documentary proof without the express permission of PERONDA GROUP.